

NOTIS

NOTISes

Number 9

August 1, 1986

Editor: Tina Homan

ANNOUNCEMENTS

As NOTIS continues to grow so does the need for more space. Consequently, until NOTIS is able to move into a building large enough to accommodate our entire staff, the Support Services librarians, System Engineers, and Jane have moved to the Science and Engineering Library. If you are experiencing difficulty in getting through to anyone please be patient during this transition. If you find that you cannot dial directly to a specific phone number, please call the main telephone number for assistance or to leave a message. For your convenience we have included copies of the most current staff list with phone numbers and the latest organization chart. (SEE Attachments #1 & #2).

MVS Release 4.3 was put into production at the Public Library of Des Moines June 26. By the time you read this issue of NOTISes all installations will have received this release.

NUPE (Northwestern User Profile-Engineering) will be sent to all installations sometime in early August. It is a questionnaire designed to provide an on-line source of user information maintained by the Systems Engineering staff. Data including the CICS environment, data conversion, installation questions, implementation of NOTIS modules and the hardware environment will be gathered to provide analysis of installations with common interests.

NOTIS is collecting forms which different installations have developed for librarians to fill in with NOTIS table values. We will compile them and send them out to all users. If your library has such a form, please send a copy to JERRY SPECHT.

You can look forward to another publication from the NOTIS office this fall--the quarterly SAS newsletter containing tips for coding, statistical functions, and SAS news from other installations.

NOTIS profile list--if you have not already submitted your user profile form, attached is a blank one. (SEE Attachment #3). It is very important for us to have the most current and accurate information on each site. Once we have collected everyone's profile form they will be distributed.

WARNING! Test read your bar code labels before you approve the order! Several libraries have reported errors in the approval sheets sent to them by label vendors. The labels looked OK to the eye, but reading the bar code itself resulted in incorrect bar code types or extra characters in the code. If you do not have a wand or laser reader on site, ask the label vendor to send another approval sheet to your Support Services librarian at NOTIS. He or she will call you after testing the sheets. (SEE Attachment #4 for listing of bar code and OCK reader manufacturers).

Bill and Fine programming specs for Circulation are finished. Users can refer to the functional specs distributed in May for review.

The RLIN segment of the Generic Transfer and Overlay Program is in testing. It is scheduled for use at the University of Minnesota this fall.

Symbol Technologies, Inc. is offering a 10% discount on their line of laser scanning products for a quantity of 1-10 and a 15% discount on orders greater than 10. However, to take advantage of this discounting, orders MUST be placed through their Chicago office at this address:

Mr. Greg Schaller
Symbol Technologies, Inc.
4811 Emerson Avenue, Suite 101
Palatine, IL 60067
Phone: 312-397-4990

MAILBAG

In every issue of NOTISes you can expect to see the MAILBAG column which is devoted to answering questions from NOTIS users. If you have questions or suggestions, please feel free to use this space. We welcome your ideas and encourage you to write us with information we can share with other users. NOTIS enhancement suggestions are also encouraged.

DOCUMENTATION SCHEDULE

TOM1-Update 4 was sent May 19. It includes revisions to several chapters in parts 1 and 2 of the Terminal Operator's Manual, Volume 1.

TOM1-Update 5 was sent June 21. This update consists of new sample tag charts for Appendix II in Volume 1, part 3 of the Terminal Operator's Manual.

Release 4.3 documentation for MVS is scheduled for distribution in early August. Included is a fourth PDS library containing SAS.

SERIALS CONTROL WORKSHOP by Mary Alice Ball

On July 8, 1986, 80 participants attended an all-day workshop on serials control. Mary Case, Northwestern University Library; Pat Ramage, University of South Alabama; and Peggy Steele, NOTIS Office, began the morning by addressing some of the problems in processing serials and monographic series.

Mary Case also discussed latest entry vs. successive entry cataloging and described the work that has been done in this area at Northwestern. Afternoon presentations by NOTIS staff included: 1) Recording holdings data in NOTIS by Peggy Steele; 2) Upcoming NOTIS enhancements for serials by Jane Burke; 3) Circulating loose serials in NOTIS by Kathy Cunningham; and NOTIS conversion services for serials' bibliographic, holdings, and item data by Allen McKiel.

The workshop provided an excellent opportunity for libraries to share ideas and experiences among themselves and with NOTIS staff. Announcements by Jane Burke included the news that Peggy Steele will move from being Manager of Support Services to a position as Systems Analyst. Peggy was the head of Northwestern's Serials Department prior to joining NOTIS and will put her considerable talents to work on examining the serials module, suggesting and writing specifications for enhancements.

Another exciting announcement was that the next major upgrade to NOTIS, Version 4.4 which is due for release on December 1, 1986, will enable the use of the 8xx fields in NOTIS bibliographic records. The 8xx fields, which represent a portion of the new MARC Format for Holdings and Locations, can be used to store holdings data until the full format is available in December 1987. If you are considering use of the 8xx fields at your library, please check with your NOTIS account manager for more information.

Other news included the work being done to interface with EBSCO and FAXON; and plans to begin design of routing slip, binding and prediction functions within the serials module.

1986 NOTIS USERS' GROUP

The fourth annual NOTIS Users Group meeting was held at Northwestern University from Wednesday, July 9 through Friday, July 11. In the September issue of NOTISes you will find a list of all attendees, brief summaries of each session, and a checklist of all NUGM handouts. Unfortunately we were not able to compile all of the information for this issue.

ENHANCEMENT PRIORITIES TALLIED

Summary of NOTIS enhancements ballot results were distributed at NUGM. (SEE Attachment #5).

1987 NOTIS USERS' GROUP

The 1987 NOTIS Users' Group is tentatively scheduled for the beginning of May. You will shortly receive a questionnaire designed to evaluate the adequacy of this year's meetings. Your prompt response will insure an even more successful series of NUGM presentations next year.

If you have information pertinent to NUGM we would be happy to begin a column appearing in each issue of NOTISes for this purpose.

LUIS AT WHITE PLAINS

White Plains Public Library is enjoying widespread acceptance of LUIS. It introduced its on-line catalog in late April. We have included an article which appeared in The New York Times. (SEE Attachment #6).

NOTIS IMPLEMENTATION AT RICE UNIVERSITY

Jim Thompson, Associate University Librarian at Rice University, wrote to Jane Burke regarding the smooth, successful implementation of NOTIS. Please read what Jim has to say. (SEE Attachment #7).

STILL FACING THE 'BAR CODING BLUES?' by Chris Carlson

Conversion Services has some good news for you. Mike Childs, of Customer Programming, has just put the finishing touches on LD016BAL. This program assigns bar codes to un-barcode linked and unlinked item records. With this program only locations count: you can bar code one location, two or all. You can also

create a label tape for your bar code vendor. It can read items whether kept in a separate file or mixed with holdings and bibliographic records. It can supply a standardized check digit to the end of the bar code if you want. When creating labels, you can also choose to have titles on them. A major highlight of this program is the automatic backup of the file containing your items. Every record read is copied to tape so the file remains intact. Note LD016BAL is a good night program since your items have to be closed to on-line processing.

WHAT IS LD025BAL? by Jim Ambrus

LD025BAL is another member of the batch link family of programs available to NOTIS users. The primary difference between LD025BAL and the other batch linkers is that LD025BAL links existing link records to their respective copy holdings statements where LD003BAL and LD008BAL create linked item records from copy holdings statements.

LD025BAL uses LC card number or the call number from the unlinked item record to access a potentially matching copy holdings record. The call number index on the LC card number index is used in locating a record key to read the appropriate copy holdings record for potential linking. The copy holdings statements are then searched for matching call number, copy number, and class to the unlinked item record in order for linking to occur. When all of the criteria for linking have been met, a new linked item is created, the old item is orphaned (or marked for deletion) and the copy holdings statement is updated.

LD025BAL has a substantial parameter list which allows tailoring the processing to individual user needs. Matching logic, reports, run time and record updating are some of the areas controlled by the parameter list.

On July 2, 1986, LD025BAL was successfully installed and run at Arlington County Public Library System in Arlington, Virginia who runs NOTIS on a DOS/VSE machine. The first MVS installation of LD025BAL at the University of Delaware is anticipated in early August.

COMPILATION OF BITNET AND NOTIS SHARE MESSAGES

What is NOTIS Share? NOTIS Share is a distribution list of NOTIS users' Mailnet or Bitnet ID's used for sending messages by electronic mail. John Taylor at Brigham Young University established NOTIS Share to provide a vehicle for users to share experiences and advice with each other. When sending a message to NOTIS@BYULIB it will automatically be distributed to everyone on the list. The NOTIS office endorses this effort and hopes it fosters communication between users.

An additional network available to many NOTIS users is the ELG mail system.

In future issues of NOTISes look for messages!

NOTIS AT ALA IN NEW YORK CITY by Jim Meyer

The NOTIS booth at the ALA Annual Conference in New York City was very busy.

Visitors included representatives of institutions which are considering NOTIS for their libraries. For example, many people from the City University of New York and from Yale University looked at NOTIS.

Many librarians from libraries which have selected NOTIS but have not yet brought the system into production came to the booth to talk about what they need to do to prepare for successful implementation of NOTIS. They also wanted to see again those parts of the system with which they would be working most directly and to see enhancements added to NOTIS since they last saw the system.

Many friends from libraries which have already installed NOTIS came to see new developments, compare notes, or just say hello. We were particularly happy to have the chance to talk with users who were able to attend ALA but were not able to come to the NOTIS Users' Group Meeting the following week.

We were very pleased to be able to demonstrate a number of enhancements to NOTIS. These included the new indexes which are the first result of the Index Redesign project. The indexes include SEE and SEE ALSO references, information history notes and scope notes, and additions to information included in the index entries. We also think the index screens look better.

People liked the new LUIS version of keyword and Boolean searching.

We demonstrated the new spine label printing programs developed by ISDO.

Ellen Zack from IBM provided the booth with the new IBM terminal that displays the full ALA character set. IBM developed the terminal with the help of staff at the University of Pennsylvania. We really appreciated the efforts Ellen made to get the terminal to the NOTIS booth in time for the opening of the ALA exhibits. We include a brochure of the IBM terminal as attachment #8.

In addition to the activity at the booth, Ned Taaie, Systems Engineer, spoke about SAS and NOTIS at the June 28 meeting of the Collection Development Librarians for Academic Libraries Discussion Group.

JAY LAMBRECHT, AT THE UNIVERSITY OF ILLINOIS AT CHICAGO, HAS THE FOLLOWING TO SAY ABOUT NOTIS

I left Northwestern University Library's Catalog Department in January 1985 after eight years. At that time my perception of NOTIS progress was that it was always steady but always slow. I had moved with the system from NOTIS2 to NOTIS3, from card production to LUIS, and from an internal system to marketed software. I had waited years for Index Redesign, keyword and Boolean capability, and other enhancements that promised to make the system work better for catalogers and users alike. Having recognized the system as a sound one, I was also aware of its shortcomings.

Eighteen months later, I have seen NOTIS from several different perspectives. I have worked for fifteen months in a library using a locally-designed system based on WLN software and then moved again to a library that is a NOTIS customer. It is difficult to maintain a balanced perspective when one is in the middle of an enterprise, so I hope that I can provide a useful view by virtue of having gone away and then returned to NOTIS.

I have learned that NOTIS progress is steady but not slow. Since I left Northwestern, the new circulation module has been implemented, Boolean/keyword has gone through its test phase and parts of Index Redesign are being tested in staff mode at Northwestern. These are extraordinary advances for the system in such a short time. Those who feel that progress is slow should step back and remember the NOTIS of five years ago or of eighteen months ago. They may begin to fear that progress will be too fast to assimilate or that quality will be sacrificed for speed. These are new perspectives, indeed.

I am still aware of the system's shortcomings, but they are as nothing compared with the other system I have experienced and left behind. The arguments for an integrated system, truly user-friendly displays, logical indexes, and good customer support are remarkably strong to anyone who has tried to live with a system that lacks any of them much less all. Other systems have had keyword or Boolean searching or online references for some time, but users are not necessarily well-served if these capabilities are filtered through an impenetrable maze of commands, indexes, and displays.

I have learned that the transition from a card catalog to an online catalog (which I am now going through for the third time) is easier to manage and easier to justify when the online catalog is at least as useful as the card file. Bringing up an online catalog that does less than the card catalog and offers no hope for improvement in the foreseeable future is devastating to staff morale.

I am happy to report that NOTIS skills are marketable skills for a cataloger. Anyone who has looked at job ads recently knows that an increasing number and a broad range of libraries are seeking professionals with NOTIS experience. As the list of customers of the system grows, so will the opportunities for those who have NOTIS background.

I feel very good about being back with NOTIS. I hope I've broadened your perspective and can keep my own in the years to come. Now if they'd only get to work on simplifying global changes...

SAMPLE SCREENS OF INDEX REDESIGN

Diane Hanisch from ISDO, Northwestern University Library, has been busy testing the new NOTIS indexes. The new indexes are the first result of the Index Redesign project. Included in this issue of NOTISes are a variety of on-line searches illustrating the new index structure. (SEE Attachment #9).

BOOLEAN/KEYWORD SEARCHING

For those of you who were unable to attend the session of NUGM with Brenda Darden from Customer Programming and for those of you who could attend but were unable to see the online searching, please find attached sample Boolean/Keyword Searching screens. (SEE Attachment #10).

THE LETTERS OF LEWIS MUMFORD

Emily Fayen, from the University of Pennsylvania, sent NOTISes a selective sample of screen prints from this special collection file. (SEE Attachment #11).

Emily spoke at NUGM about the use of NOTIS in this special file at the University of Pennsylvania, but was unable to dial in to show the file at the meeting. The screen prints illustrate what she described in her talk.

RECENT INSTALLATIONS

McGill University (May)
University of Minnesota (May)
Missouri Southern State College (May)
University of Wisconsin (May)
Central Missouri State University (June)
Fort Hays State University (June)
University of Notre Dame (June)
Southeast Missouri State University (June)
West Chester University (July)

UPCOMING INSTALLATIONS

University of Iowa
Loyola University
University of Michigan
Michigan Technological Institute
National Geographic Society
University of Texas at Arlington
University of Utah
University of Windsor

NEWS FROM NOTIS MARKETING

The NOTIS Office has recently responded to Requests for Proposals and Requests for Information from Hofstra University and the University of Manitoba. Currently Jane is working on a bid for Los Angeles County Public Library, which is due at the end of August.

NEWS FROM SUPPORT SERVICES

Effective August 1 Peggy Steele will resign her position as manager of Support Services. She has accepted a new position as systems analyst in Customer Programming and will concentrate on enhancements to the serials module. Ben Burrows, Support Services librarian, will succeed Peggy as the new manager of Support Services. Good luck to both of them!

Jim Meyer returned to the NOTIS office June 2 from the Catalog Department of Northwestern University Library to assume the position of Library Documentation Coordinator. His responsibilities include developing new user documentation and indexing the Terminal Operator's manuals.

On the road again...

Mary Alice Ball and Ben Burrows trained library staff at Central Missouri State University, June 17 & June 18, in LUIS and Introductory Cataloging.

Ben Burrows trained library personnel at the University of Vermont June 3 through June 5. He concentrated on Introductory Cataloging and Introductory Acquisitions, and demonstrated NOTIS to the general staff. On July 24 Ben visited Vanderbilt University to train in Advanced Acquisitions. He traveled to the University of Pennsylvania, July 29 & 30, to instruct in Serials and Authority Control.

Kathy Cunningham traveled to the Library of Michigan to train library personnel in LUIS, Introductory Cataloging, and Introductory Acquisitions (June 3-5). She trained at the University of Minnesota June 17 through 19, covering Advanced Cataloging, Advanced Acquisitions, Introductory Serials, and Authority Control. Training at the Library of Michigan began July 22 to July 25 in Advanced Acquisitions, Advanced Cataloging, Introductory Serials Control, and Circulation Implementation.

Tom McGinn traveled to McGill University for training in Implementation, Introductory Cataloging, and LUIS, June 4-6. On June 12 Tom traveled to Missouri Southern State College for an implementation visit. At Tulsa City County Library, June 13, he reviewed Serials Control. He visited Montgomery County Community College, June 19 & 20, for instruction in Introductory Acquisitions. July 16 & 17 he trained the University of Delaware in Advanced Cataloging; July 31 & August 1 he also trained Wayne State University in Advanced Cataloging.

Peggy Steele and Jerry Specht traveled to West Chester University for a pre-installation visit on June 6. June 18 they went to Fort Hays State University for a pre-installation visit.

NEWS FROM SYSTEMS ENGINEERING

Bill Easton joined the Systems Engineering crew May 27. He comes to NOTIS from A.S. Hansen Inc. where he was employed as a programmer analyst. Previously he worked at Time, Inc. He earned his B.A. from St. Edward's University in Austin, Texas and his M.A. in Education from Loyola University. We welcome him as the FIFTH engineer. He is installing NOTIS at MVS installations.

NEWS FROM CONVERSION SERVICES

Bill Drewett is the newest addition to Conversion Services as a Data Conversion Specialist. He earned his B.A. from Rice University and his M.L.S. from Louisiana State University. Before joining NOTIS he was employed at the University of Illinois as a Procedures & Systems Planner and at ALA's Resources and Technical Services Division.

NEWS FROM CUSTOMER PROGRAMMING

Cynthia Villasenor recently joined the programming staff. She comes from Natural Gas Pipelines of America having worked for 3 1/2 years as a programmer. She has degrees in Computer Science and Marketing from Northern Illinois University, in DeKalb, Illinois.

ATTACHMENTS

The following are attached:

- #1 NOTIS Staff List
- #2 NOTIS Organization Chart
- #3 NOTIS User Profile Form
- #4 Selected Bar Code and OCR Reader Manufacturers List
- #5 Summary of NOTIS Enhancements Ballot Result
- #6 On-line Public Cataloging at White Plains Public Library
- #7 NOTIS Implementation at Rice University
- #8 IBM Brochure for the IBM 3163 and IBM 3164
- #9 Sample Screens of Index Redesign
- #10 Boolean/Keyword Searching
- #11 Screen Prints from University of Pennsylvania Special Collections-The Lewis Mumford File
- #12 Library Journal/July 1986

Attachment #1

NOTIS Stafflist August 1, 1986

NOTE: The area code is 312 and the exchange is 491 for all extensions.

Director

Jane Burke 7004/5

Support Services

Ben Burrows, Manager 4275/04
Mary Alice Ball, Librarian 8131
Kathy Cunningham, Librarian 4274
Tom McGinn, Librarian 4272
Jim Meyer, Doc. Coordinator 5136
Tina Homan, Doc. Specialist 4271

Systems Engineering

Jerry Specht, Manager 8130
Bill Easton, MVS Engineer 5126
Jorge Fernandez, VSE Engineer 4269
Randy Menakes, MVS Engineer 4270
Ned Taaife, MVS Engineer 8129

Conversion Services

Chris Carlson, Manager 4273
Bill Drewett, Data Conv. Specialist 5157
Allen McKiel, Data Conv. Specialist 4276

Customer Programming

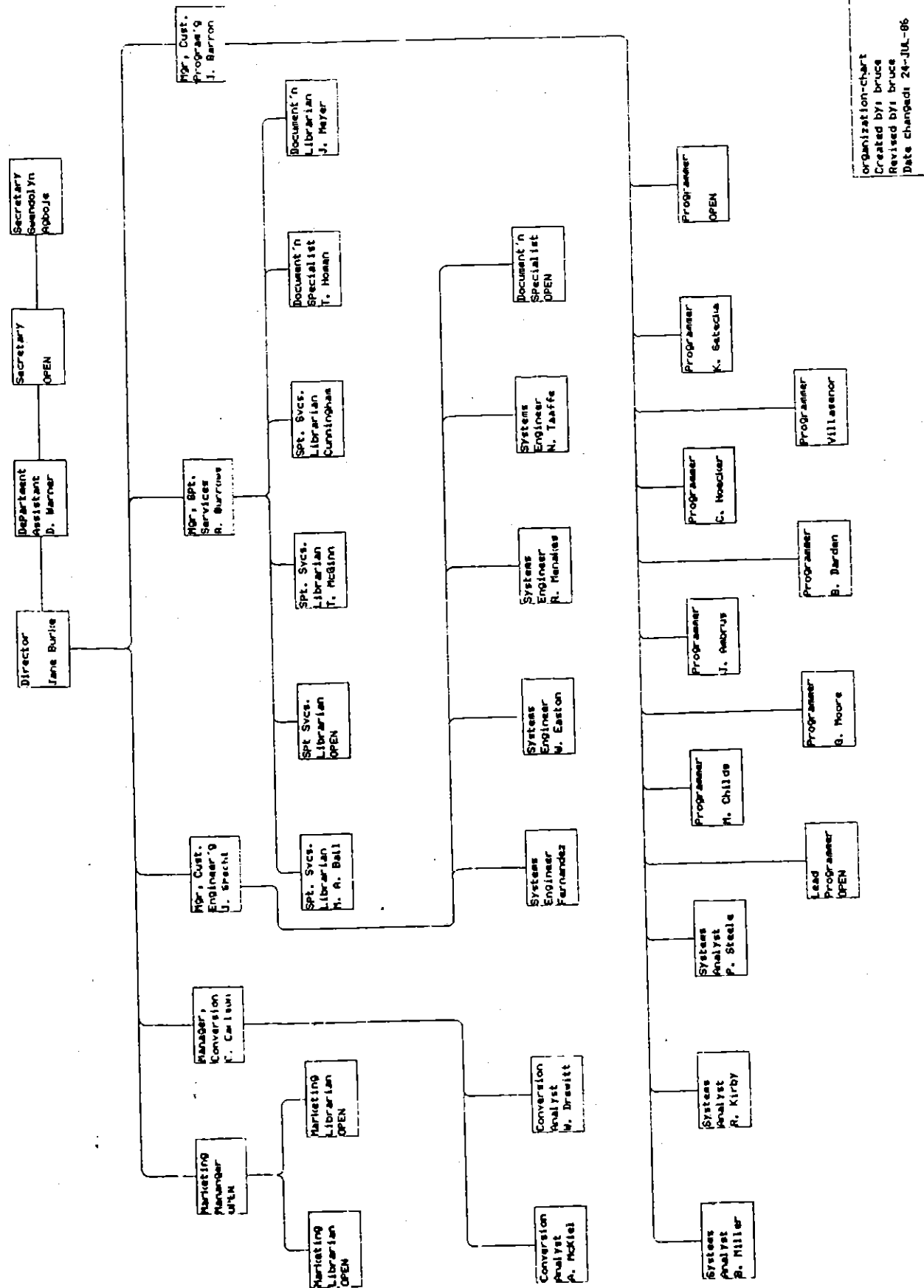
John Barron, Manager 8761
Jim Ambrus, Senior Programmer 4265
Mike Childs, Senior Programmer 4262
Brenda Darden, Senior Programmer 4264
Christine Hoecker, Senior Programmer 4268
George Moore, Senior Programmer 4263
Kieran Setecka, Senior Programmer 7105
Bruce A. Miller, Systems Analyst 8762
Roberta Kirby, Systems Analyst 7109
Peggy Steele, Systems Analyst 8128
Cynthia Villasenor, Programmer 5065
Tracy Mathesius, Consultant 4266

Support Staff

Doris J. Warner, Department Asst. 7004
Gwendolyn Agboje, Secretary 7004

General Office Extensions

7004/5



Record Updated: _____

Customer: _____

Name of Library (if different): _____

City: _____ State: _____ ZIP _____

Country (if foreign): _____

Contract signed: _____ Contract type: _____

Library type: _____ Install date: _____

Oper. system: _____ CPU: _____

No. of terminals: _____ No. of records: _____

Manuals sent: _____ (yr/mo #)

Functions used or anticipated (fill in yr/mo for each)

_____ Cataloging	_____ OCLC Interface
_____ Acquisitions	_____ RLIN Interface
_____ Serials	_____ Circulation
_____ Authorities	_____ LUIS

LIBRARY CONTACTS:
(Librarian 1 will be named as the primary contact in published lists of NOTIS users unless otherwise noted.)

<u>Librarian Contact 1</u>	<u>Librarian Contact 2</u>
_____	_____
_____	_____
<u>Title</u>	<u>Title</u>
_____	_____
<u>2 line street address</u>	<u>2 line street address</u>
_____	_____
_____	_____
<u>Phone:</u> _____	<u>Phone:</u> _____

NOTIS
Northwestern University Library
1935 Sheridan Road, Evanston, IL 60201
July 16, 1986

Selected companies that print bar code and OCR labels to order

Computype, Inc.
2285 West County Road C
St. Paul, MN 55113
(800) 328-0852
(They printed piggy-back labels for Northwestern University Library.)

Data Composition, Inc.
1099 Essex
Richmond, CA 94801-2185
(800) 227-2121 (outside California)
(415) 232-6200 (In California)
Telex: 910-563-3699
(They printed labels for the University of Florida Libraries and Northwestern University Library, and also print piggy-back labels.)

Davis + Henderson Ltd.
41 Scarsdale Road
Don Mills, CANADA M3B 2R2
(416) 449-1230
Attn: Ralph J. McKittrick

Data Document Systems
301 Gardner Drive
Industrial Airport, KA 66031
(800) 255-6820
Attn: Jim McMerney

Customark Division
Markem Corporation
800 Park Avenue
Keene, NY 03431
(603) 352-5390
(They printed labels for University of Pittsburgh)

Watson Label Products
3684 Forest Park Blvd.
St. Louis, MO 63108
Attn: Fred Wolfe
(314) 652-6715
(They printed labels for Vanderbilt University Library, White Plains Public Library and Northwestern University Library, and also print piggy-back labels)

Technical Contact 1

Technical Contact 2

Title

Title

2 line street address:

2 line street address:

Phone:

Phone:

Director

Title:

2 line street address:

Phone:

COMMENTS/NOTES:

Date: July 18, 1986

To: NOTIS users

From: Bruce Miller

Re: Corrected summary of NOTIS enhancements ballot results

Following are the "top 25" requested enhancements, for the 41 ballots received as of July 2. The top 3 enhancements were heavy favorites; after them, libraries' preferences were varied.

The summary distributed at the user meeting included one entry twice. The duplicate has been omitted and an additional enhancement has been added to the end of the list.

1. Index redesign, including conflict detection, blind reference detection, heading review list, indexing on linking entry fields and search limiting (VII.1.)
2. Suppress LUIS display of a bibliographic record, such as a withdrawn one (VIII.5.)
3. Batch purge of patron records (II.1.)
4. Improve global change techniques to provide easier global changes for (a) subject headings; (b) embedded subfields; (c) headings with diacriticals (VI.10.)
5. Assign PF key(s) for recall/hold function and simplify recall/hold procedure (II.31.)
6. In author or title searches, normalize to include initials with or without periods (VII.26.)
7. Option to block renewal if hold exists for item.
8. Index call numbers on-line, especially for unlinked item records (VII.29.)
9. Implement MARC holdings format (IV.1.)
10. On-line "shelf listing" capability. (The call number index does not always match actual shelf sequence.) (IV.8.)
11. Option to block renewal if hold exists for item. (II.35.)
12. Cross-references to vendors (V.22.)

13. Microcomputer programs to collect charge and discharge transactions and interact with charge and discharge. (II.10.)

14. Ability to accept invoices from major vendors in machine-readable form. (V.8.)

15. Duplicate detection -- not see two identical index entries. (VII.2.)

16. "Derive"-like command to create authority record from bibliographic record. (VI.11.)

17. On-line mass renewal capability (II.20.)

18. Ability to go directly from staff mode display to LUIS display of a record. (VII.35.)

19. Lists of new acquisitions (V.11.)

20. Block patron for too many items overdue, when batch program generates overdue notice. (II.37.)

21. More efficient way to create linked item records (change command on screen after create; consider a command equivalent to "derive"). (II.7.)

22. Better way to handle analytic added entries. (III.18.)

23. Merge multiple bibliographic and copy holdings records. (III.13.)

24. Implement NISO detailed volume holdings format. (IV.2.)

25. Method for "collecting" holdings from more than one bibliographic record, as in the case of a title change. (IV.5.)

In White Plains, New Librarian Has a Mind Like a Catalogue

By RHODA M. GILINSKY

THE large sign that greets the public entering the White Plains Public Library invites visitors to "Meet LUIS — Search Him," but some of the patrons refrain from immediate interaction. It is not that LUIS is socially unacceptable but rather that LUIS is new and strange to them. Once introduced, however, many patrons are won over and profess enthusiasm and loyalty.

LUIS is the acronym for Library User Information Service, the new computer database system that will eventually replace the traditional card catalogue at the White Plains Public Library, the first public library in the county with an on-line public-access catalogue. LUIS was formally introduced to the public late last month, although the system had started to operate informally several weeks earlier.

On a recent visit, 11-year-old Joanna Feldman and 12-year-old Robert Lindsay showed no resistance at all to LUIS. Sitting at one of the two terminals in the children's room, Robert searched for Nancy Drew titles. Initially unsuccessful, Robert was told by a librarian that Nancy Drew was a pen name and he must look under Keece, Carolyn. When he typed in the name, the screen displayed a long list of the ever-popular mystery books and, in a moment, he spotted the one he was looking for — "The Clue in the Diary."

"It's a lot quicker than the card catalogue," he said, explaining why he preferred using LUIS.

"It took me about 10 minutes to learn how to use it," Joanna said. An aficionado of science fiction, Joanna agreed with Robert that the computer was a speedier way to locate a favorite author or interesting science book.

Downstairs, some adult patrons went through the card catalogue while others experimented with a nearby terminal. Amy Landon, a student at the State University of New York at Purchase, was poring over the card catalogue. "When you're looking for just one book, I think the card catalogue is easier," Miss Landon said. "When I need information on a broader topic, I will go to the computer."

"It's just not my thing," Ruth Woolf said emphatically, as she glanced toward the terminal. At an offer of help in using LUIS, Mrs. Woolf agreed to give it a whirl, but even with the library's director, Orrin D. Dow, showing her its virtues, Mrs. Woolf was not quite convinced. She said she still preferred the card catalogue as a way to find the cookbook and travel information she was seeking.

Just around the corner, Larry Clark was in front of another terminal researching the subject of mask-making for his girlfriend. "I find it easy to use," he said, offering up an on-the-spot demonstration by calling up all the titles the library had on the subject. "I wouldn't go back to the card catalogue unless I absolutely had to," he added.

Mr. Clark's response was exactly what Mr. Dow said he wants. "It's probably one of the most exciting things that happened within my library life and probably in this library's



Elana Nightingale, above at left, with Paul Fixler as they used LUIS at White Plains Library. At...

... left, Simone Simmons at the information service terminal at the library.

The New York Times / Suzanne DeCher

history," he said. "And the most exciting part is that it makes the library much more vital and current in people's lives."

He noted that librarians in general were "behind the times, but having automated information handling means we will have live, up-to-date information."

According to Mr. Dow, "People who are very information-conscious and who are actively pursuing information never bothered with us because they knew we were out-of-date."

So far, almost 90 percent of the library's catalogue has been entered into the computer's data base. Patrons can obtain a wide range of information: What books and other materials are in the library, just where they are, what books are on order and how many of them are have been ordered.

Marie Donnelly, the project officer and systems manager, said: "The library has been keyboarding information into the data base for the last six years. We used college students who worked, for the most part, in the evenings. We did it for our new acquisitions as they came in and then we converted our whole card file. There are 165,000 titles."

The library has six terminals in the adult area and two in the children's room. It will add eight more terminals in the adult area by fall, according to Mr. Dow, and there will be 30 terminals a year from now. Four of those will be in the children's room and the rest variously throughout the library.

There is only one printer and one must make a ask a librarian to use it. Eventually there will be printers for all of the terminals. "We have the terminals near the catalogue

now because we're traditional in our thinking and also because we want to ease the transition, but there is no reason they have to be there. In fact, with the terminals we'll be adding, they can be located throughout the building, including the stacks," Mr. Dow said.

Mrs. Donnelly noted that the terminals were placed so people could search for their information either standing or sitting. "When you're dealing with a card file, you have to go from one end of it to the other and back and forth. This way you can stay in one place," she said.

With the old card catalogue it took several months to add new books to the file and sometimes months or even years to remove cards for discarded, lost or stolen items, Mr. Dow said. The computer data bank will be able to

handle this information immediately.

To use the system to find a book, a person simply needs to type the letter "e" and press the Enter key, then follow the instructions displayed on the screen. Materials can be searched by author, title or subject.

LUIS is part of a total automated library management system called Northwestern On-Line Total Integrated System, which the

'The trouble is not getting the kids to use LUIS but getting them away from it'

city of White Plains purchased for use in the library. The software for LUIS cost \$65,000 and there is a yearly charge of \$10,000 to \$12,000 to maintain it, Mr. Dow said, adding that about \$125,000 worth of terminals, printers and other computer accessories had been purchased.

When the entire system is in place it will provide, among other services, a rapid circulation system using bar-coded information similar to that used in supermarkets. "You will be able to find out whether the book is on the shelves or it is out; we'll have that in about three or four months," Mr. Dow said. "The card catalogue will exist but we will start to withdraw from it — we won't be adding to it, so its use will gradually decrease."

Mrs. Donnelly said, "But it will always remain because there may be those items that might not have got into the on-line for one reason or other."

She noted that in the children's room the catalogue had already been moved out of the way. "The trouble is not getting the kids to use LUIS but getting them away from it," one children's librarian said.

Although the system was tested for several months after installation, some hitches still appear; library patrons have been told to ask for help from a librarian in those cases or to turn to the card catalogue.

"There are no cross-references yet and there may be some frustration in searching for older materials," one of that is in yet, Mrs. Donnelly said. "But it is great for the more current and up-to-date materials."

At this time, nearly all the books are in the video cassette collection and both the disk and cassette recordings. "The system will also give us an opportunity to put in things that are not in there now — such as magazines, periodicals, paperback books and community information," Mrs. Donnelly noted.

Mr. Dow said he was impressed by the extent of computer literacy on the part of the public. "We had an entirely wrong conception of that," Mr. Dow said. "I am amazed at the numbers of men, women and children who knew how to use this system right away."

RICE UNIVERSITY

THE FONDREN LIBRARY

HOUSTON, TEXAS

77251-1892

(713) 527-4022

JAMES C. THOMPSON
ASSOCIATE UNIVERSITY LIBRARIAN

June 10, 1986

Jane Burke, Director
NOTIS Office
Northwestern University Library
1935 Sheridan Rd.
Evanston, IL 60201

Dear Jane,

Thanks for your letter about our lack of disk space. This would have created a problem, but fortunately we were able to use a slush fund to purchase a fourth disk, a 3370 A02. With this we will start a second DASD string which should help with I/O once BRS is up, and make it comparatively easy to slip in another B02 if that becomes necessary for the keyword indices.

Would you please indicate by letter your OK for the addition of the new disk?

I thought it might be useful at this time to sum up our experiences in installing NOTIS here at Rice. Our implementation has been in what we believe to be record time and with almost no problems. This I attribute to our early decision to ignore the usual bureaucratized methods for bringing up systems and to instead rely heavily on a few excellent people, freed from day-to-day responsibilities for the interim and protected by the library administration from meddling by line supervisors (how to protect them from meddling by the library administration is another story).

In all of this, we have been perhaps uniquely fortunate to have Kay Flowers in charge of the system. When my original plea for several highly-trained IBM people fell on deaf ears, I had to rely on Kay and a lot of fast training, and she came through every time. She worked night and day from the time the hardware was delivered until—well, she still does. (Fortunately, she now has a backup and potential replacement in training).

Hardware and software were installed, debugged, etc., in October of last year. It took several months to refine the database loading and indexing programs, owing to many peculiarities of our recon project. (This would not have been necessary had we selected a particular system for which to convert records before we began recon.) Once we had that worked out, the load took eighteen hours and worked the first time.

We put public terminals out at the end of April, but could have done so a month earlier—Sam didn't want to aggravate the departing seniors by showing

them what they'd missed. Circulation came up in one day in mid-May. Patron records loaded the week they arrived, after some adjustments on Kay's part. Unlinked item records loaded on the first try, after we dumped them from CLSI using a program commissioned from a graduate student for the sum of \$900. (This program is available with consulting assistance to other CLSI libraries switching to NOTIS.)

Perhaps most remarkably, cataloging production did not drop even momentarily during the implementation process. In fact in April, when the switch-over was made, production per OCLC up-day actually increased. This is to Kay's credit again and Anne Adler's, whose Processing Services staff had a highly productive working relationship with Kay and her assistant.

In all of this we had excellent support from your staff and from IBM and Telex.

About the only suggestion I would make would be to add a training session immediately after the contract is signed, concentrating on preparations for installation. However, the forthcoming installation manual might make this unnecessary. An expense which we didn't fully allow for was off-site training for Kay and now for her assistant, in CICS, SSX, assembler, etc. I wonder if it might be possible for your office to arrange (or provide) some sort of group training at less-than-IBM rates.

I look forward to seeing you at ALA.

With best wishes,

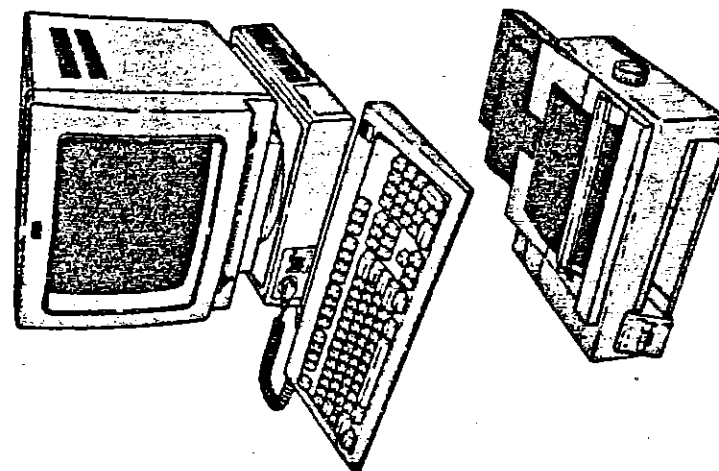
Sincerely,



James C. Thompson
Associate University Librarian

P.S. As of Sept. 1, I will be University Librarian at UC/Riverside.

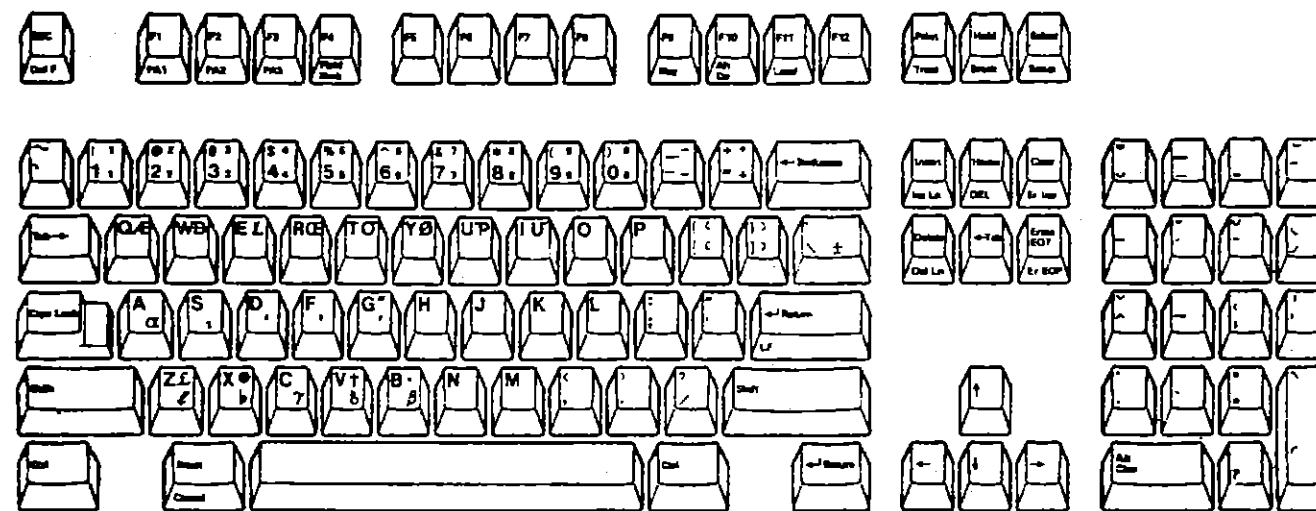
Attachment #8



ALA Support

for the
IBM 3163
and
IBM 3164

ASCII Display Stations



The keyboard shown is used with both cartridges.

For further information on the cartridges and keyboard, please contact your local IBM Marketing representative or:

Ellen Zach c/o
IBM CPD Display Products
Neighborhood Road #976
Kingston, New York, 12401
(914) 385-4147

ALA ON IBM ASCII Displays

IBM has developed two new cartridges and a new keyboard for use with either the IBM 3163 ASCII display (12 in. mono) or the 3164 ASCII display (14 in. color) which enable the user to input, display and print all characters contained in the Extended American Library Association (ALA) Character set.

The new keyboard contains all ALA characters in an easy-to-use layout, with all diacritic characters contained on one keypad in standard lower/upper case positions. Special characters are accessed via an alternate character shift key that automatically reverts to the standard character set after one keystroke, thus eliminating the need for an extra "shift out" keystroke.

Local printer support is available using either the Pro Printer or Pro Printer/XL.

The two cartridges use the same code tables and data streams, but implement character display in slightly different manners.

Both these cartridges and the ALA keyboard are being offered as RPQ's to the standard 3163 and 3164.

Cartridge 1 - Consistent Implementation - 86+ languages

Cartridge 1 is geared toward environments where all languages must be input and displayed in a consistent manner.

Cartridge 1 provides ALA character support by displaying each diacritic, alpha or special character in an individual space on the display screen. Diacritics precede the alpha character they modify.

Example

Keyed: ,E,t,u,d,e
Displayed: Étude

Local Printer Support

Used in conjunction with Cartridge 1, the Pro Printer or Pro Printer/XL combines the diacritic/alpha combinations and prints them in a single space.

Example

Displayed: Étude
Printed: Étude

An extra space is added at the end of each word where a combination has occurred to keep the printed and displayed text consistent.

RPQ#	Machine/Model	Price
8J0059	3164-860	\$1376*
8J0060	3163-860	976*

*This price which includes the cartridge and keyboard is a delta of \$81 over the price of a standard 3163/3164 Model 110. Price quoted is for a quantity of one, and is subject to change without notice.

Available: 9/86

Cartridge 2 - Composite Implementation - 25 languages

Cartridge 2 provides the ability to display all diacritic/alpha combinations used in the following 25 languages in a single display position.

German	French	Spanish
Italian	Russian	Portuguese
Dutch	Polish	Swedish
Danish	Japanese	Hungarian
Ukrainian	Bulgarian	Chinese
Greek	Norwegian	Indonesian
Korean	Finnish	Icelandic
Catalan	Albanian	Hawaiian
	Faroese	

Combinations in languages other than those listed above are displayed in side-by-side positions on the screen.

Example (French)

Keyed: ,E,t,u,d,e
Displayed: Étude

(Arabic)

Keyed: ,H,a,s,a,n
Displayed: Hasan

Local Printer Support

See Cartridge 1 description

RPQ#	Machine/Model	Price
8J0062	3164-861	\$1385*
8J0063	3163-861	985*

*This price which includes the cartridge and keyboard is a delta of \$90 over the price of a standard 3163/3164 Model 110. Price quoted is for a quantity of one, and is subject to change without notice.

Available: 11/86

LTNU MORE

BIBLIOGRAPHIC INDEX -- 563 HEADINGS FOUND, 1 - 16 DISPLAYED
AMA

NOTIS INDEX SEARCH

L8AE

- 1
 - 2
 - 3
 - 4
 - 5
 - 6
 - 7
 - 8
 - 9
 - 10
 - 11
 - 12
 - 13
 - 14
 - 15
 - 16
- *SEARCH UNDER
- AMERICAN MANAGEMENT ASSOCIATION
 - AMERICAN MANAGEMENT ASSOCIATIONS
 - AMERICAN MARKETING ASSOCIATION
 - AMERICAN MEDICAL ASSOCIATION
 - AMERICAN MISSIONARY ASSOCIATION
 - AMERICAN MUNICIPAL ASSOCIATION
 - ASSOCIATION OF METROPOLITAN AUTHORITIES
 - AUTOMOBILE MANUFACTURERS ASSOCIATION
- AMA BIBLIOGRAPHY SERIES
- *SEARCH UNDER
- BIBLIOGRAPHY SERIES (AMERICAN MARKETING ASSOCIATION)
 - (AMERICAN MANAGEMENT ASSOCIATIONS)
 - /FINANCIAL REPORTING UNDER CHANGING VALUES <1977>
 - /AGE DISCRIMINATION IN EMPLOYMENT <1978>
 - /AGGRESSIVE BENEFITS MANAGEMENT <1976>
 - /ASSESSING COMPUTER CENTER EFFECTIVENESS <1977>
 - /BRIDGING THE SYSTEMS EXPECTATIONS GAP <1973>
 - /BUSINESS GOVERNMENT AND THE PUBLIC INTEREST <1976>
 - /CAPTIVE INSURANCE COMPANIES <1972>

LTNU MORE

NOTIS INDEX SEARCH

L&AE

BIBLIOGRAPHIC INDEX -- 38 HEADINGS FOUND, 1 - 7 DISPLAYED

- CHICAGO UNIVERSITY
*SEARCH UNDER
- 1 UNIVERSITY OF CHICAGO
/THE UNIVERSITY OF CHICAGO STUDIES IN LIBRARY SCIENCE
 - 2 /DIFFERENTIATING THE MEDIA <1975>
CHICAGO UNIVERSITY BIOLOGY DEPT
*SEARCH UNDER
 - 3 UNIVERSITY OF CHICAGO BIOLOGY DEPT
CHICAGO UNIVERSITY CENTER FOR CHILDRENS BOOKS
*SEARCH UNDER
 - 4 UNIVERSITY OF CHICAGO CENTER FOR CHILDRENS BOOKS
CHICAGO UNIVERSITY CENTER FOR CONTINUING EDUCATION
*SEARCH UNDER
 - 5 UNIVERSITY OF CHICAGO CENTER FOR CONTINUING EDUCATION
CHICAGO UNIVERSITY CENTER FOR FAR EASTERN STUDIES
*SEARCH UNDER
 - 6 UNIVERSITY OF CHICAGO CENTER FOR FAR EASTERN STUDIES
CHICAGO UNIVERSITY CENTER FOR HEALTH ADMINISTRATION STUDIES
*SEARCH UNDER
 - 7 UNIVERSITY OF CHICAGO CENTER FOR HEALTH ADMINISTRATION STUDIES

LTNU MORE

NOTIS INDEX SEARCH

L&AE

BIBLIOGRAPHIC INDEX -- 18 HEADINGS FOUND, 1 - 16 DISPLAYED

- AMERICAN GAS ASSOCIATION
- 1 *FOR INFORMATION ON THIS HEADING TYPE 1
 - 2 /GAS CHEMISTS BOOK OF STANDARDS FOR LIGHT OIL <1943>
 - 3 /GAS CHEMISTS MANUAL OF DRY BOX PURIFICATION <1943>
 - 4 /MONTHLY SUMMARY OF GAS COMPANY STATISTICS <NEW YORK>
 - 5 /MONTHLY SUMMARY OF GAS COMPANY STATISTICS <NEW YORK>
 - 6 /NATURAL GAS <1963>
 - 7 /PROCEEDINGS <NEW YORK N>
 - 8 /STATISTICAL BULLETIN <N Y>
- AMERICAN GAS ASSOCIATION BUREAU OF STATISTICS
*SEARCH ALSO UNDER THE LATER HEADING
- 9 AMERICAN GAS ASSOCIATION DEPT OF STATISTICS
 - 10 /BULLETIN OF UTILITY GAS SALES <NEW YORK>
 - 11 /GAS FACTS <NEW YORK>
 - 12 /REPORT OF GAS INDUSTRY OPERATIONS <NEW YORK>
- AMERICAN GAS ASSOCIATION DEPT OF STATISTICS
*SEARCH ALSO UNDER THE EARLIER HEADING
- 13 AMERICAN GAS ASSOCIATION BUREAU OF STATISTICS
 - 14 /GAS FACTS <ARLINGTON>
 - 15 /GAS UTILITY INDUSTRY PROJECTIONS <ARLINGTON>
 - 16 /HISTORICAL STATISTICS OF THE GAS UTILITY IND <1977>

LTNU

NOTIS INDEX SEARCH

L8AE

BIBLIOGRAPHIC INDEX -- 8 HEADINGS FOUND, 1 - 8 DISPLAYED

POINTS CARDINAUX

- 1 *FOR INFORMATION ON THIS HEADING TYPE 1
- 2 <LA PIERRE->
- 3 /BIBLE DE SAINT-SAVIN <20>
- 4 /CATHEDRALE DALBI <23>
- 5 /CHRISTS ROMANS <14>
- 6 /EGLISES RUSSES <18>
- 7 /MONDE DE CHARTRES <3>
- 8 /MONDE DES CRYPTES <2>

LTNU MORE

NOTIS INDEX SEARCH

L8AE

BIBLIOGRAPHIC INDEX -- 503 HEADINGS FOUND, 1 - 19 DISPLAYED

STARS

- 1 *FOR INFORMATION ON THIS HEADING TYPE 1
- *SEARCH ALSO UNDER
- 2 ALPHA CENTAURI
- 3 ASTROLOGY
- 4 ASTRONOMY
- 5 ASTROPHYSICS
- 6 BLACK HOLES (ASTRONOMY)
- 7 CONSTELLATIONS
- 8 COOL STARS
- 9 DENSITY WAVE THEORY
- 10 DWARF GALAXIES
- 11 DWARF STARS
- 12 EARLY STARS
- 13 GALAXIES
- 14 GRAVITATIONAL COLLAPSE
- 15 LIFE ON OTHER PLANETS
- 16 MAGELLANIC CLOUDS
- 17 MAGNETIC STARS
- 18 MECHANICS CELESTIAL
- 19 MERAK

LTNU MORE

NOTIS INDEX SEARCH

L8AE

BIBLIOGRAPHIC INDEX -- 94 HEADINGS FOUND, 1 - 20 DISPLAYED

ELIOT T S (THOMAS STEARNS) (1888-1965)

- 1 *FOR INFORMATION ON THIS HEADING TYPE 1
- 2 /AFTER STRANGE GODS <1933>
- 3 /ANABASIS <1930>
- 4 /ANABASIS <1930>
- 5 /ANABASIS <1962>
- 6 /AT THE MEMORIAL SERVICE FOR WILLIAM COLLIN B <1959>
- 7 /BRITAIN AT WAR <1941>
- 8 /CHOICE OF KIPLINGS VERSE <1967>
- 9 /COCKTAIL PARTY <1950>
- 10 /COCKTAIL PARTY <1951>
- 11 /COCKTAIL PARTY <1974>
- 12 /COLLECTED POEMS 1909-1935 <1936>
- 13 /COLLECTED POEMS 1909-1962 <1963>
- 14 /COLLECTED POEMS 1909-1962 <1963>
- 15 /COLLECTED POEMS 1909-1962 <1974>
- 16 /COMPLETE PLAYS <1967>
- 17 /COMPLETE POEMS AND PLAYS <1952>
- 18 /CORRESPONDENCE <1985>
- 19 /CRITERION <LONDON>
- 20 /CRITERION <LONDON>

Attachment #10

Booleau / Keyword Searching

THIN

LUIS: LIBRARY USER INFORMATION SERVICE

LUIS can be used to find BIBLIOGRAPHIC information, LOCATIONS, and CALL NUMBERS for materials held by Northwestern University Libraries and by the Garrett-Seabury Library. Use the card catalog for materials not in the LUIS database. CIRCULATION information is available for titles in the LUIS database which are located in the main (except Transportation), Music, and Science Engineering Libraries. Please inquire at a service desk for circulation status of other materials.

SEARCH options:	COMMAND:
To search by TITLE:	t
AUTHOR:	a
SUBJECT:	s
KEYWORD:	k

USERS FAMILIAR WITH LUIS MAY ENTER A SEARCH REQUEST ON THIS SCREEN.

FOR LIBRARY SYSTEM NEWS, type NEWS.

TO CORRECT A MISTAKE, type over the error or clear screen to start over.

TYPE COMMAND AND PRESS ENTER==>

TO SEARCH BY KEYWORD:

KEYWORD searches allow a single term (e.g. word, name) or a combination of terms to be used for searching the online catalog. They are useful when you are unsure about the order of words in a title, have incomplete information about an item, or when a subject heading is not known or does not retrieve enough entries.

Since KEYWORD SEARCHES look for a term or phrase anywhere in bibliographic records, this method may locate items not found through LUIS author, title or subject searches. It also allows linking of terms from different parts of a record such as an author's name with a word from a book title.

EXAMPLES: k=microcomputer not software
k=(drunk adj driving) and legislation.su.

TO LEARN MORE ABOUT KEYWORD SEARCHING, TYPE m.

NOTE: Short keyword searches (up to 48 characters) may be entered on any LUIS screen; longer ones (up to 218 characters) must be entered on this screen. TYPE e TO START OVER.

TYPE COMMAND AND PRESS ENTER==>

3
HELP FOR SEARCH BY KEYWORD:

USING LOGICAL OPERATORS

SEARCHES may be refined with the use of Logical Operators. These OPERATORS are used between the various TERMS (words) to specify the positional relationship of the terms within a single document. Below are the valid operators for KEYWORD searching and their meanings (where X and Y are search TERMS):

OPERATOR	MEANING
AND	Both term X and term Y must occur in the same document.
OR	Either term X or term Y must occur in the same document.
NOT	Term X occurs in the document but Y does not.
ADJ	Term X must come immediately before term Y (ADJACENT).

You may use keyword searching to enter a search on a single term which allows you to find all the occurrences of your term in the fields indexed, such as title, (.ti.), author, (.au.), and subject (.su.).
TYPE m TO CONTINUE, type e TO START OVER.

TYPE COMMAND AND PRESS ENTER==>

4
HELP FOR SEARCH BY KEYWORD:

For example: k=industry

You may refine your search further by asking that your word be found only in a particular field.

For example: k=industry.ti. which will find all documents with the word industry in the title fields.

NOTE: When using keyword searching, do not search on such common terms as a, an, but, and as. These are called STOPWORDS, and have been purposely left out of the keyword indexes.

For more information about stopwords, ask a librarian for assistance.

You may enter a search from this screen.
TYPE e TO START OVER.

TYPE COMMAND AND PRESS ENTER==>

5
LUIS SEARCH REQUEST: K=PSYCHOLOGY

KEYWORD SEARCH INDEX -- 100 ENTRIES FOUND, 19 - 36 DISPLAYED

19. XP:Measurement and evaluation in psychology a *Thorndike, Robert La <1961
20. XP:Inside the criminal mind *Samenow, Stanton E <1984
21. XP:The conceptual framework of psychology *Brunswik, Egon <1952
22. XP:The varieties of religious experience *James, William <1963
23. XP:Locus of control *Lefcourt, Herbert M <1982
24. XP:Piaget's theory of intellectual developmen *Ginsburg, Herbert <1969
25. XP:Counseling women *Collier, Helen V <1982
26. XP:Implementing family-centered maternity care with a *Haire, Doris <1968
27. XP:On the development of developmental psychology <1983
28. XP:Essays in psychology *James, William <1983
29. XP:Imagery, concepts, results, and applicatio *American Association <1981
30. XP:Imagery, theoretical and clinical applicat *American Association <1983
31. XP:A behavioral approach to historical analys *Berkhofer, Robert F <1969
32. XP:In the shadow of the past <1984
33. XP:A theory of adaptive economic behavior *Cross, John G <1983
34. XP:Personal being *Harre, Romano <1984
35. XP:The psychology of reading and spelling disabilities *Jorm, A. F <1983
36. XP:Ego psychology and social work practice *Goldstein, Eda G <1984

TYPE m FOR MORE ENTRIES. TYPE LINE NO. FOR BIBLIOGRAPHIC RECORD WITH CALL NO.
TYPE e TO START OVER. TYPE h FOR HELP.
TYPE COMMAND AND PRESS ENTER

6
LUIS SEARCH REQUEST: K=PSYCHOLOGY COMPUTERS

KEYWORD SEARCH INDEX -- 3 ENTRIES FOUND, 1 - 3 DISPLAYED

1. XP:The psychology of human-computer interaction *Card, Stuart K <1983
2. XP:Behavior research methods and instrumentation <Madison, Wis
3. XP:Information technology and psychology, pro *Houston Symposium <1982

TYPE LINE NO. FOR BIBLIOGRAPHIC RECORD WITH CALL NO.
TYPE e TO START OVER. TYPE h FOR HELP.
TYPE COMMAND AND PRESS ENTER

LUIS SEARCH REQUEST: K=PSYCHOLOGY COMPUTERS
BIBLIOGRAPHIC RECORD -- NO. 2 OF 3 ENTRIES FOUND

Behavior research methods and instrumentation. v. 1-15; Sept. 1968-Dec. 1983.
Madison, Wis., Psychonomic Journals.
Bimonthly.

Continued by: Behavior research methods, instruments, & computers. ISSN 0743-
3808

SUBJECT HEADINGS (Library of Congress; use s=):
Psychology, Physiological--Periodicals.

LOCATION: MAIN

CALL NUMBER: L150.5 B417

VOLUMES: 1-15(1968,sept-1983)

CIRCULATION STATUS: Circulation information not available in LUIS

TYPE m FOR NEXT RECORD.

TYPE i TO RETURN TO INDEX. TYPE e TO START OVER. TYPE h FOR HELP.

TYPE COMMAND AND PRESS ENTER

8

LUIS SEARCH REQUEST: K=ACID ADJ RAIN

KEYWORD SEARCH INDEX -- 7 ENTRIES FOUND, 1 - 7 DISPLAYED

1. XP:Acid rain *Environmental Resources Limited <1983
2. XP:Troubled skies, troubled waters *Luoma, Jon R <1984
3. XP:Acid rain *Harrell, Karen Fair <1983
4. XP:Acid rain *Ellis, M. Fred <1984
5. XP:Time lost *Canada <1984
6. XP:Acid rain *Elsworth, Steve <1984
7. XP:Acid rain control <1985

TYPE LINE NO. FOR BIBLIOGRAPHIC RECORD WITH CALL NO.

TYPE e TO START OVER. TYPE h FOR HELP.

TYPE COMMAND AND PRESS ENTER

9

LUIS SEARCH REQUEST: K=PSYCHOANALYSIS.SU. NOT FREUD
KEYWORD SEARCH INDEX -- 72 ENTRIES FOUND, 1 - 18 DISPLAYED

1. XP:Le celeste et le sublunaire *Viderman, Serge <1977
2. XP:Neurosis and human growth *Horney, Karen <1950
3. XP:La plume sur le divan *Tytell, Pamela <1982
4. XP:Of love and lust *Reik, Theodor <1957
5. XP:Interpreting Lacan <1983
6. XP:L'autre moi *Chabot, Jacques <1983
7. XP:Insight and responsibility *Erikson, Erik H <1964
8. XP:An outline of psychoanalysis *Thompson, Clara Mabel <1955
9. XP:La bataille de cent ans *Roudinesco, Elisabeth <1982
10. XP:les debuts de la psychanalyse en France, 1 *Mordier, Jean-Pierre <1981
11. XP:Our adult world, and other essays *Klein, Melanie <1963
12. XP:Le corps d'amour *Brown, Norman Oliver <1968
13. XP:La subversion de l'ame *Cazenave, Michel <1981
14. XP:Le sacre du pere *Pelckmans, Paul <1983
15. XP:Shakespeare's reparative comedies *Westlund, Joseph <1984
16. XP:Hypothesis and evidence in psychoanalysis *Edelson, Marshall <1984
17. XP:The technique of psychoanalytic psychother *Langs, Robert J <1983
18. XP:The healing of the mind *Fine, Reuben <1982

TYPE m FOR MORE ENTRIES. TYPE LINE NO. FOR BIBLIOGRAPHIC RECORD WITH CALL NO.
TYPE e TO START OVER. TYPE h FOR HELP.
TYPE COMMAND AND PRESS ENTER

10

LUIS SEARCH REQUEST: K=(ADOLESCENS OR TEENAGS).TI,SU. AND DRUGS
KEYWORD SEARCH INDEX -- 2 ENTRIES FOUND, 1 - 2 DISPLAYED

1. XP:Drugs, drinking, and adolescents *Macdonald, Donald Ian <1984
2. XP:Preventing adolescent drug abuse <1983

TYPE LINE NO. FOR BIBLIOGRAPHIC RECORD WITH CALL NO.

TYPE e TO START OVER. TYPE h FOR HELP.

TYPE COMMAND AND PRESS ENTER

LUIS SEARCH REQUEST: K=MARKETING AND \$ATION.TI.
KEYWORD SEARCH INDEX -- 3 ENTRIES FOUND, 1 - 3 DISPLAYED
1. XP:Highways as factor in small manufacturing plant location decisio <1961
2. XP:Application of the marketing concept to intermodalism <1984
3. XP:Broadening the concept of marketing <1972

TYPE LINE NO. FOR BIBLIOGRAPHIC RECORD WITH CALL NO.
TYPE e TO START OVER. TYPE h FOR HELP.
TYPE COMMAND AND PRESS ENTER

12
LUIS SEARCH REQUEST: K=COMPUTERS.TI. AND (CONFER\$ OR PROCEEDS) AND 1984
BIBLIOGRAPHIC RECORD -- NO. 1 OF 1 ENTRIES FOUND

Reading on Cognitive ergonomics--mind and computers : Proceedings of the 2nd
European conference, Gmunden, Austria, September 10-14, 1984 / edited by G.C
van der Veer ... <et al.>. -- Berlin ; New York : Springer-Verlag, 1984.
267 p. : ill. ; 24 cm. -- (Lecture notes in computer science ; 178)
Contains papers to be presented at the European Conference on Cognitive
Ergonomics--Mind and Computers, held in Gmunden, Austria, Sept. 1984; and
sponsored by IFIP WG. 6.3.

SUBJECT HEADINGS (Library of Congress; use s=):
Electronic digital computers--Psychology--Congresses.
Interactive computer systems--Congresses.
System design--Congresses.

LOCATION: SCIENCE ENGINEERING
CALL NUMBER: 001.64019 R287
CIRCULATION STATUS: Not charged out. If not on shelf, ask at Circulation Des

TYPE e TO START OVER. TYPE h FOR HELP.
TYPE COMMAND AND PRESS ENTER

Attachment #11

LTSC DONE

AAA3718

NOTIS CATALOGING D305

SC# AAA3718 FMT B LGND am DT 06/17/86 R/DT 06/20/86 STAT nn E/LEV DCF ?
SRC d PLACE ??? LANG ??? MOD ? I/LEV ? REPRO ? D/CODE ? DT/1 ???? DT/2 ????
CONT ???? ILLUS ???? GOVT ? BIOG ? FEST ? CONF ? FICT ? INDX ? ME/B ?

100:10: 1a Mumford, Lewis.
245:10: 1a Letters by Lewis Mumford.
260:1 : 1c n.d.
300: : 1a 1 item (1 leaf).
590/1: : 1a Haynes, George. E. (recipient).
590/2: : 1a Harmon Foundation (recipient).
500/3: : 1a Photocopy; original in Harmon Foundation file, Mumford Collection,
Van Pelt Library.

PennLIN SEARCH REQUEST: A=C
Bibliographic Record -- NO. 245 Of 434 Entries FOUND

Cohn, Alfred E.
Letters to Lewis Mumford. 1943-1951.
15 items (20 leaves).

LOCATION: CORRESPONDENCE INDEX
CALL NUMBER: aaa0878
CIRCULATION STATUS: Circulation information not available in LUIS

TYPE m FOR NEXT RECORD.
TYPE i TO RETURN TO INDEX, g TO RETURN TO GUIDE, e TO START OVER, h FOR HELP.
Type command and press ENTER .

PennLIN SEARCH REQUEST: A=C
Bibliographic Record -- NO. 273 Of 434 Entries FOUND

Columbia Broadcasting System.
Letters to Lewis Mumford. 1946-1981.

LTSC DONE

AAA1253

NOTIS CATALOGING D305

SC# AAA1253 FMT B LGND am DT 05/21/86 R/DT none STAT nn E/LEV DCF ?
SRC d PLACE ??? LANG ??? MOD ? I/LEV ? REPRO ? D/CODE ? DT/1 ???? DT/2 ????
CONT ???? ILLUS ???? GOVT ? BIOG ? FEST ? CONF ? FICT ? INDX ? ME/B ?

100:10: 1a Eiseley, Loren C.
245:10: 1a Letters to Lewis Mumford.
260:1 : 1c 1962-1970.
300: : 1a 9 items (10 leaves).
700/1:10: 1a Eiseley, Mabel.

LTSC DONE

AAA4359

NOTIS CATALOGING D305

SC# AAA4359 FMT B LGND am DT 06/26/86 R/DT none STAT nn E/LEV DCF ?
SRC d PLACE ??? LANG ??? MOD ? I/LEV ? REPRO ? D/CODE ? DT/1 ???? DT/2 ????
CONT ???? ILLUS ???? GOVT ? BIOG ? FEST ? CONF ? FICT ? INDX ? ME/B ?

100:10: 1a Tait, Agnes ("Gabrielle").
245:10: 1a Letters to Lewis Mumford.
260:1 : 1c n.d.
300: : 1a 22 items (25 leaves, 2 small cards, 2 greeting cards).

LTSC DONE

AAA0014

NOTIS CATALOGING D305

SC# AAA0014 FMT B LGND am DT 03/20/86 R/DT 07/14/86 STAT nn E/LEV DCF ?
SRC d PLACE ??? LANG ??? MOD ? I/LEV ? REPRO ? D/CODE ? DT/1 ???? DT/2 ????
CONT ???? ILLUS ???? GOVT ? BIOG ? FEST ? CONF ? FICT ? INDX ? ME/B ?

100:10: 1a Abercrombie, Neil.
245:10: 1a Letters to Lewis Mumford.
260:1 : 1c 1973.
300: : 1a 4 items (11 leaves).

LTSC DONE

AAA0020

NOTIS CATALOGING D305

SC# AAA0020 FMT B LGND am DT 03/21/86 R/DT 07/14/86 STAT nn E/LEV DCF ?
SRC d PLACE ??? LANG ??? MOD ? I/LEV ? REPRO ? D/CODE ? DT/1 ???? DT/2 ????
CONT ???? ILLUS ???? GOVT ? BIOG ? FEST ? CONF ? FICT ? INDX ? ME/B ?

100:10: 1a Ackerman, Frederick.
245:10: 1a Letters to Lewis Mumford.
260:1 : 1c 1929-1941.
300: : 1a 13 items (21 leaves).

Another card catalog goes online



Mayor Alfred DelVecchio and sisters Sonia and Sofia Dedusevic of White Plains, New York are introduced to LUIS, the White Plains Public Library's new online public access catalog, by Library Director Orrin B. Dow (left). The public was invited to "meet" LUIS in this very simple, informative brochure (right). To date, almost 90 percent of the library's card catalog has been entered into the computer's database. LUIS will tell patrons what materials are in the library (by author, title, or subject), where they

are located, and what books are on order. According to Board of Trustees President Kenneth W. Leish, "LUIS is part of a total, automated library management system called NOTIS (Northwestern Online Total Integrated System) that the library is gradually implementing. LUIS is the part the public sees and uses." Orrin Dow adds that "... NOTIS will collect the data that will help us make the informed decisions to better manage the collection and best serve the information needs of the public"

DOBIS catalog system installed in Douglas County library

Douglas County, Oregon has installed DOBIS catalogs in its Roseburg facility and several branches are due to get units. The DOBIS system, created in Germany by German IBM people and extensively used in Europe and the Middle East, has been installed in Canadian libraries, but has made few incursions into the American market, despite very favorable reviews and the need of many libraries for a system that will run on IBM computers.

The scuttlebutt has been that IBM is reluctant to provide support to DOBIS, which, although an IBM product, is not an *American* IBM product.